

FARS

Engineering Limited

FARS Engineering Limited

Tel: (852) 2724-6689 Fax: (852) 2635-6066

E-mail: admin@fars-engineering.com

RS SOLDIER & ACCESSORIES



Length 3600 mm

Length : 3600mm



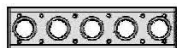
Length 2700 mm

Length : 2700mm



Length 1800 / 1250 mm

Length : 1800mm



Length 900 / 720 / 540 mm

Length : 900mm



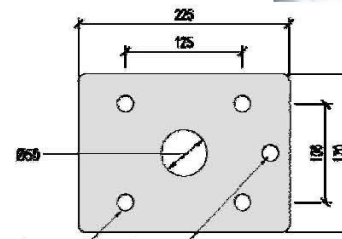
Length 450 / 360 mm

Length : 450mm

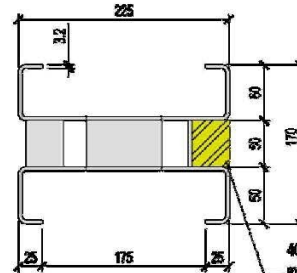


Length 225 / 180 mm

Length : 225mm



End Plate Detail



Soldier Section Detail



SPECIFICATIONS AND PROPERTIES

Weight	23.2	kg/m	Minimum F.O.S.	2:1	kN
C.S. Area (Gross)	23.75	cm ²	Maximum Axial Compression (Facade)	290	kN
C.S. Area (Net)	18.63	cm ²	Maximum Axial Compression (Shore)	100	kN
E	206000	N/mm ²	Maximum Axial Tension	115	kN
I _{xx}	1657	cm ⁴	Maximum Bending Moment (hog)	30	kNm
I _{yy}	484	cm ⁴	Maximum Bending Moment (sag)	30	kNm
r _x	9.43	cm	Maximum Tie Load	95	kN
r _y	5.10	cm			

Notes:

- End attachments and strut lengths may limit Compression/Tension loads
- The minimum bearing length to be no less than 155mm
- The optional timber inserts are excluded from the weight
- The axial load is not reduced at the joint

CONTACT TEL. NO. : 2724-6689 ; FAX NO. : 2635-6066 ;

EMAIL ADDRESS: robertcwg@fars-engineering.com, or admin@fars-engineering.com

FARS

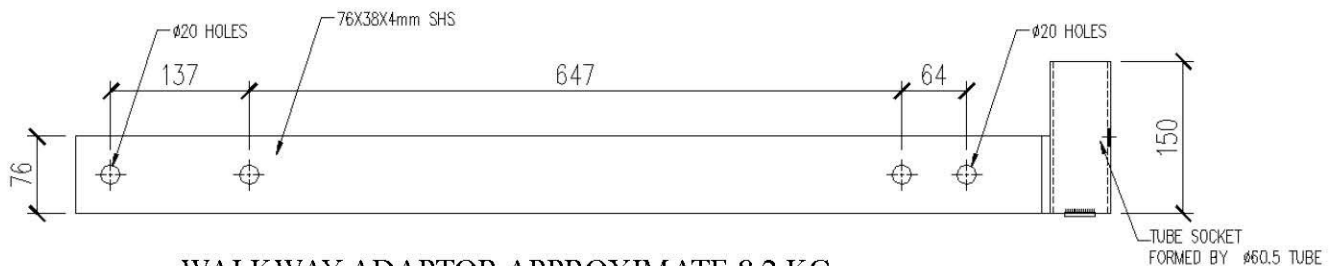
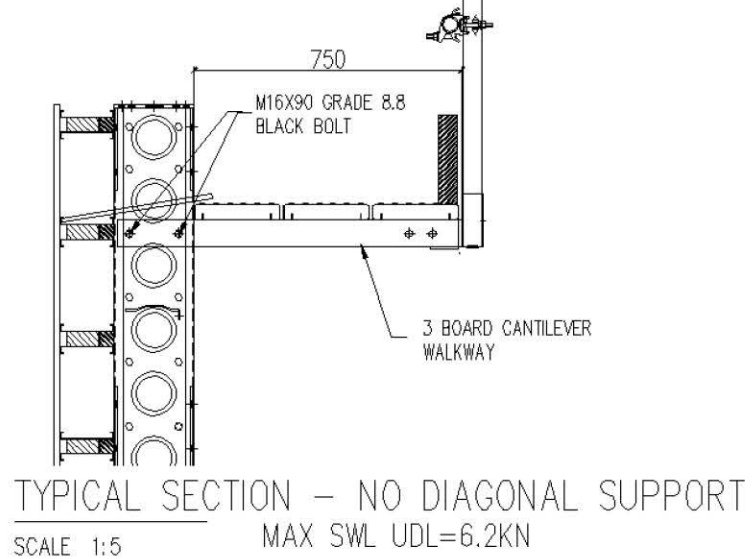
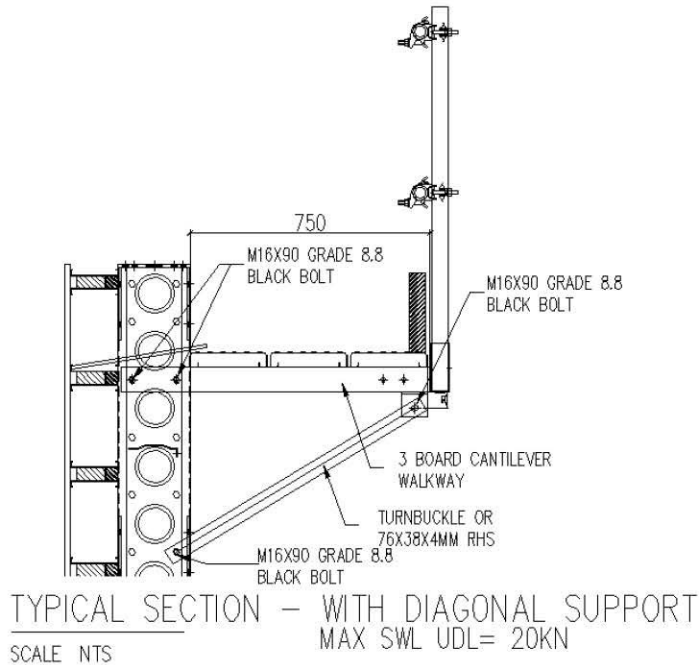
Engineering Limited

FARS Engineering Limited

Tel: (852) 2724-6689 Fax: (852) 2635-6066

E-mail: admin@fars-engineering.com

SOLDIER – WALKWAY BASE ADAPTOR



CONTACT TEL. NO. : 2724-6689 ; FAX NO. : 2635-6066 ;

EMAIL ADDRESS: robertcwgng@fars-engineering.com, or admin@fars-engineering.com